

# **Aleratec®**

**[www.aleratec.com](http://www.aleratec.com)**

*The Prosumers' Choice*

## **SOFTWARE USER GUIDE**

---

### **Aleratec 1:10 USB 3.0 Copy Cruiser Mini™**



**Part No. 330113, 330113EU**

# Copyright/Model Identification

The content of this manual is for informational purposes only and is subject to change without notice.

This manual is copyrighted with all rights reserved. Under copyright laws, this manual and the software described within may not be copied, except in the normal use of the product(s) described within or to make a backup copy.

Copyright© 2013  
Aleratec, Inc.  
9851 Owensmouth Avenue  
Chatsworth, CA 91311 U.S.A.

[www.aleratec.com](http://www.aleratec.com)

Aleratec is a registered trademark and 1:10 USB 3.0 Copy Cruiser Mini™ is a trademark of Aleratec, Inc.

## Check out Aleratec Online!

- *[Blog.Aleratec.com](http://Blog.Aleratec.com)*
- *[Facebook.com/Aleratec](http://Facebook.com/Aleratec)*
- *[Twitter.com/Aleratec](http://Twitter.com/Aleratec)*
- *[YouTube.com/Aleratec](http://YouTube.com/Aleratec)*

---

Please record the following information to help expedite any warranty claim:

Model No. \_\_\_\_\_ Serial No. \_\_\_\_\_

Date Purchased \_\_\_\_\_

Place of Purchase \_\_\_\_\_

# Table of Contents

<b>Introduction.....</b>	<b>1</b>
Initial System Setup.....	1
USB 3.0 Host Adapter Installation .....	2
Windows 7, Vista Driver Installation.....	2
For Ease of Use.....	3
<b>Using the USB Duplication Suite Software .....</b>	<b>4</b>
Main Menu.....	4
Data Copy Only .....	5
Format Only.....	11
Format Then Data Copy .....	16
Create Image File.....	22
Clone Image File.....	24
Drive Letter Management.....	26
Port Training .....	28
<b>Technical Support .....</b>	<b>31</b>
<b>Technical Support FAX Back Form .....</b>	<b>32</b>



***Aleratec***<sup>®</sup>  
***www.aleratec.com***  
*The Prosumers' Choice*

# Introduction

Thank you for purchasing the 1:10 USB 3.0 Copy Cruiser Mini. Please read this Software User Guide thoroughly before using this product.

## Initial System Setup

1. Connect the USB 3.0 cable (included) to the USB port on the back of your duplicator and to an empty USB 3.0 port on your computer. If you do not have an available USB 3.0 port on your computer please see the section titled “USB 3.0 Host Adapter Installation” on page 2 for information regarding the included USB 3.0 PCI Express dual port host adapter.
2. Check that the red Voltage Selector Switch on the back of the unit is set to the proper voltage for your area.
3. Connect the included power cord to the power input on the duplicator and into an available power outlet.
4. Insert the Aleratec 1:10 USB 3.0 Copy Cruiser Mini Installation and Software CD into an available CD/DVD drive of your computer.
5. Click on Install Aleratec USB Duplication Suite to install the duplication software.
6. Follow the on-screen prompts to complete the installation.
7. Attach the Aleratec 1:10 USB 3.0 Copy Cruiser Mini to your computer using the High Speed USB 3.0 cable provided.
8. Press the power button to power up the Aleratec 1:10 USB 3.0 Copy Cruiser Mini.
9. The green power LED will light, and the computer will recognize the device.
10. Start the USB Duplication Suite duplication software via the icon on your Desktop or in the Start menu under “All Programs.”



USB Duplication Suite

# Introduction

## USB 3.0 Host Adapter Installation

1. Turn off and unplug the power cable from the back of your computer.
2. Remove the cover to access the internal hardware of your computer.
3. Locate a free PCI Express slot and remove the metal cover plate on the rear of the computer case. (Your new USB 3.0 Host Adapter will fit and work with any PCI Express slot whether it is a x1, x4, x8 or x16 slot. Performance may vary with each slot.)
4. When installing the USB 3.0 Host Adapter, make sure to fasten the bracket as documented in your computer manufacturer's documentation.
5. Be sure to connect the SATA power connector from the power supply to the card as it does require additional power to function properly.
6. Place the cover back onto your computer.
7. Reattach the power cable to your computer and turn it back on.

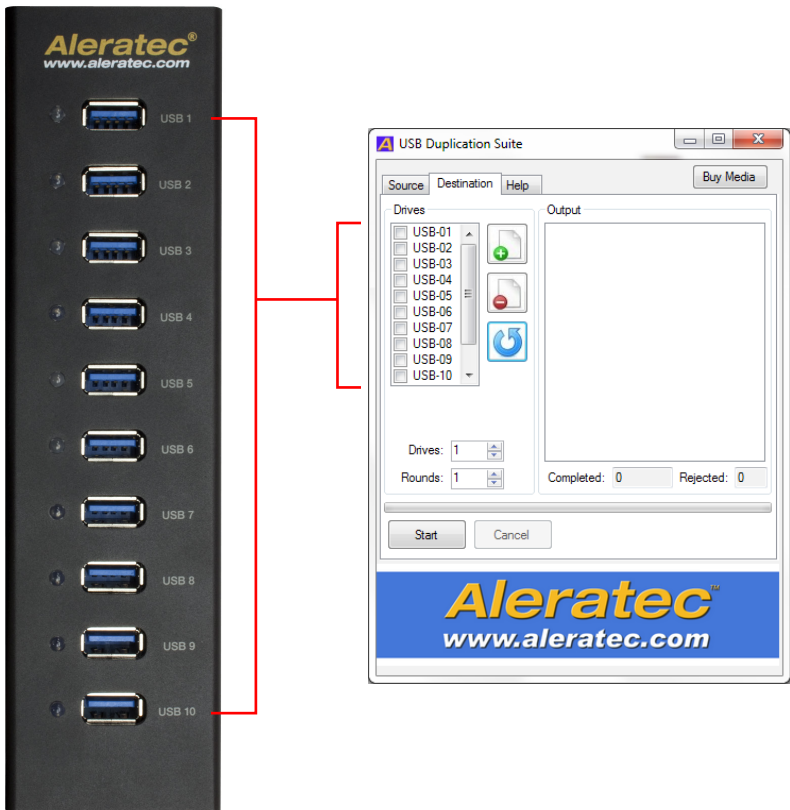
## Windows 7, Vista Driver Installation

1. Insert the Aleratec 1:10 USB 3.0 Copy Cruiser Mini Installation and Software CD into an available CD/DVD drive of your computer.
2. Click on Install USB 3.0 Host Adapter Drivers to install the drivers for your new USB 3.0 Host Adapter.
3. Follow the on-screen prompts to complete the installation.

# Introduction

## For Ease of Use

To make duplication even easier, we've added a feature that lets you match up the logical drives shown in the USB Duplication Suite software with the actual physical port position of that drive. To take advantage of this function, a "Port Training" needs to be performed to match each USB Port to your 1:10 USB 3.0 Copy Cruiser Mini. For example, you would likely designate the upper-leftmost port on the duplicator Port 1 and so on (see image).



For details please see section titled Port Training on page 28 in the manual.

# Using the USB Duplication Suite Software

## Main Menu

The USB Duplication Suite's main menu offers six functions:

1. Data Copy Only
2. Format Only
3. Format Then Data Copy
4. Create Image File
5. Clone Image File
6. Drive Management
7. Port Training

Choose the desired option from the drop down menu.





# Using the USB Duplication Suite Software

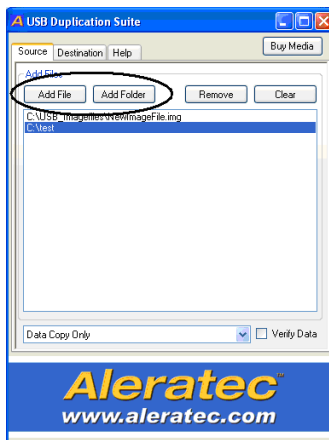
## Data Copy Only

Use this function to copy the contents of a folder to one or more USB flash drives. This function will overwrite any files/folders on the target device(s) with the same name as the source files/folders.

1. Start by choosing Data Copy Only from the drop down menu.



2. On the same screen, click “Add Files” to copy individual files or “Add Folder” to copy an entire folder.

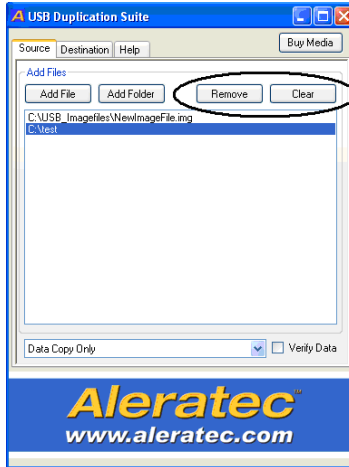


**Note:** Make sure that your selected data DOES NOT exceed the capacity of the smallest flash drive that you are copying to. This will result in failure.

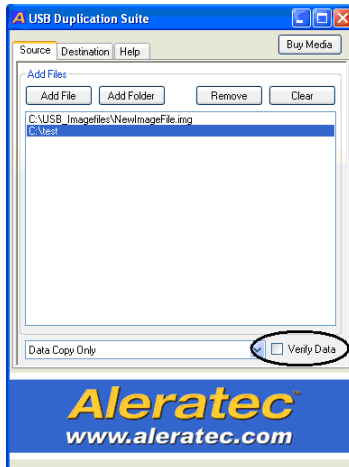
# Using the USB Duplication Suite Software

## Data Copy Only - *continued*

3. If you wish to remove an added file or folder, select the item and click “Remove.” To clear the list of files/folders to add, click “Clear.”

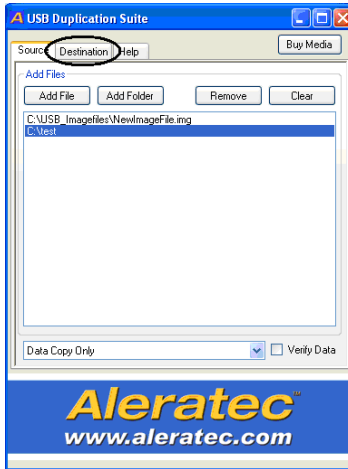


4. If you wish to verify the source data is copied successfully, click to check the box next to “Verify Data.”

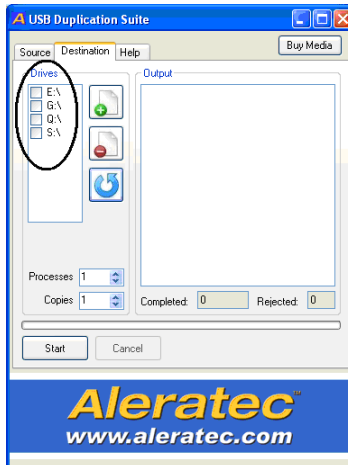


# Using the USB Duplication Suite Software

- Once you have added all the files/folders you want to copy, click the tab at the top of the window named “Destination”.



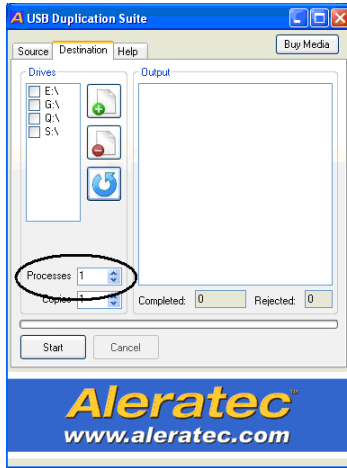
- Click to select each USB flash drive that you want to copy to. You can click the button with the green “+” symbol to select all drives or the button with the red “-” symbol to deselect all drives. The button with the blue arrow will refresh the current list of drives.



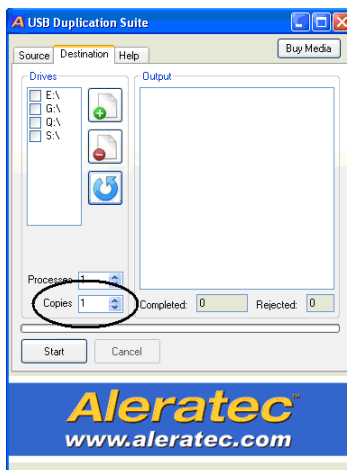
# Using the USB Duplication Suite Software

## Data Copy Only - *continued*

7. The “Processes” counter displays how many concurrent processes you want to run at once. The more processes you choose the more drives will be copied to simultaneously.

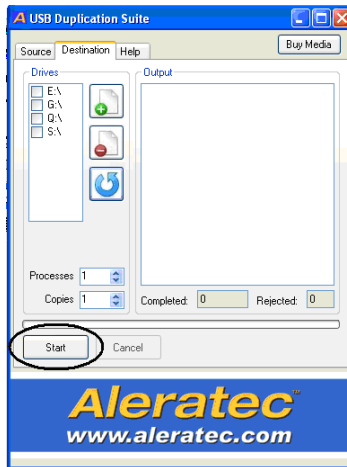


8. The “Copies” counter is the total number of copies you want to do. If the number of copies specified is more than the number of available drive slots, the software will break up the job into multiple “rounds”, requiring the user to switch in new cards after each round is completed.

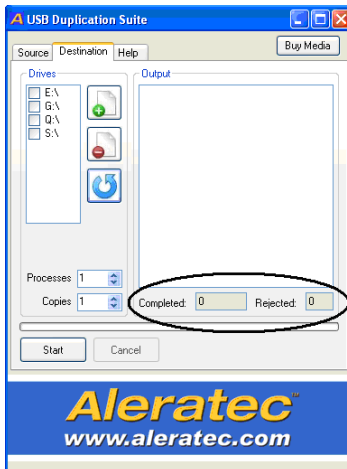


## Using the USB Duplication Suite Software

- Once the drives, processes, and copies are specified, the user may click “Start” to begin the duplication process.



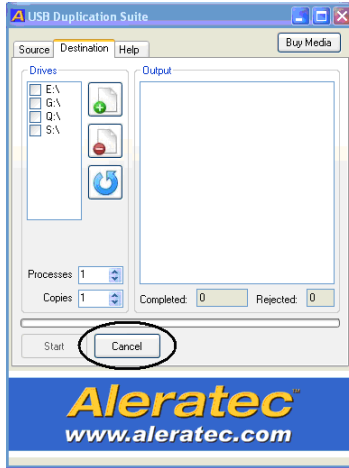
- Progress is displayed through messages in the log and in the progress bar. Also, the number of completed and rejected copies is displayed underneath the output log.



# Using the USB Duplication Suite Software

## Data Copy Only - *continued*

11. If the user wishes to cancel the duplication process at any time, just click “Cancel.”



# Using the USB Duplication Suite Software

## Format Only

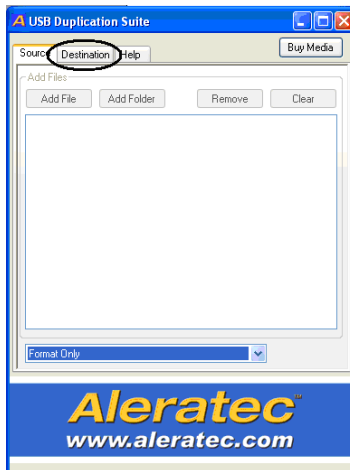
Format one or more USB flash drives with this command (FAT formatting only). A volume label to identify the media is added at the same time.

**Note:** The “Add File” interface will be disabled since it is not used.

1. Start by clicking on “Format Only” from the drop down menu.



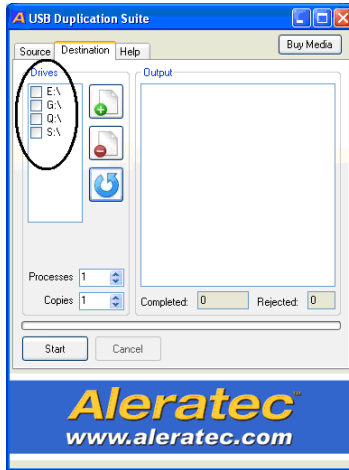
2. Click on the “Destination” tab located at the top of the window.



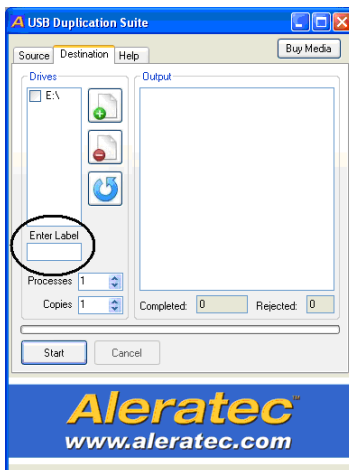
# Using the USB Duplication Suite Software

## Format Only - *continued*

3. Select the drives that you wish to format. You can click the button with the green “+” symbol to select all drives or the button with the red “-” symbol to deselect all drives. The button with the blue arrow will refresh the current list of drives.



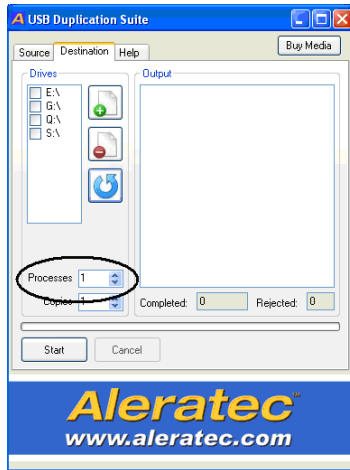
4. You can specify a single label for each drive in the text box under “Enter Label.” If no label is specified, the label that the drive currently has will be used.



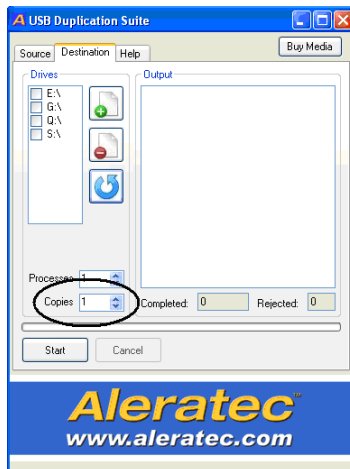


## Using the USB Duplication Suite Software

- The “Processes” counter displays how many concurrent processes you want to run at once. The more processes you choose the more drives will be copied to simultaneously.



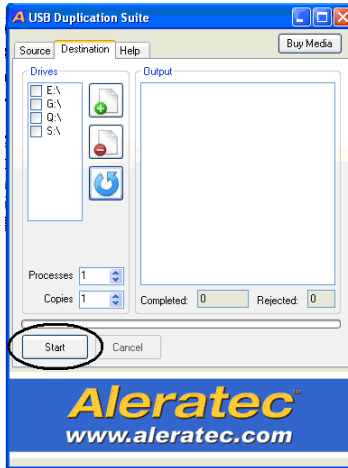
- The “Copies” counter is the total number of copies you want to do. If the number of copies specified is more than the number of available drive slots, the software will break up the job into multiple “rounds”, requiring the user to switch in new cards after each round is completed.



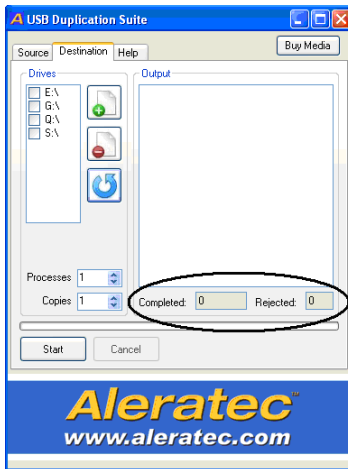
# Using the USB Duplication Suite Software

## Format Only - *continued*

- Once the drives, processes, and copies are specified, the user may click “Start” to begin the duplication process.

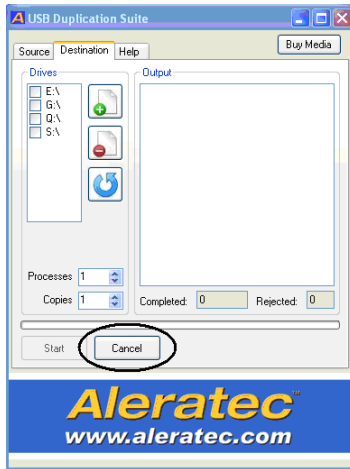


- Progress is displayed through messages in the log and in the progress bar. Also, the number of completed and rejected copies is displayed underneath the output log.



## Using the USB Duplication Suite Software

9. If the user wishes to cancel the duplication process at any time, just click “Cancel”.



# Using the USB Duplication Suite Software

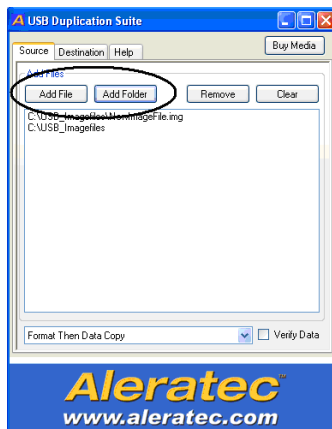
## Format Then Data Copy

This function will format and then copy files/folders to one or more USB flash drives. Any files/folders on the target device(s) with the same names as any source files/folders will be overwritten.

1. Start by clicking on “Format Then Data Copy” from the drop down menu.



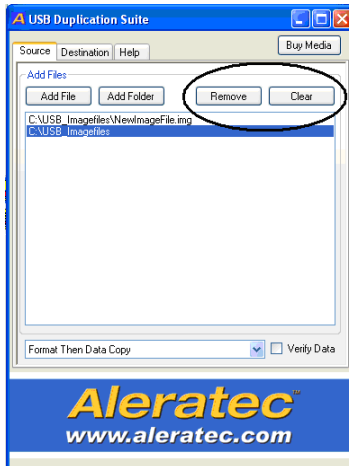
2. On the same screen, click “Add Files” to copy individual files or “Add Folder” to copy an entire folder.



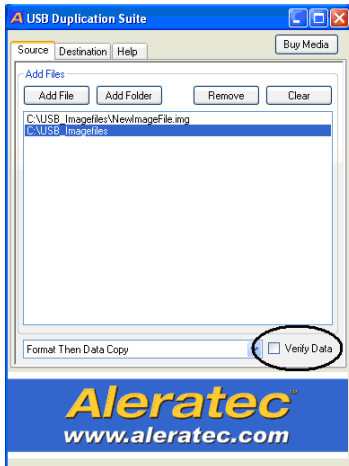
**Note:** Make sure that your selected data DOES NOT exceed the capacity of the smallest flash drive that you are copying to. This will result in failure.

## Using the USB Duplication Suite Software

3. If you wish to remove an added file or folder, select the item and click “Remove.” To clear the list of files/folders to add, click “Clear.”



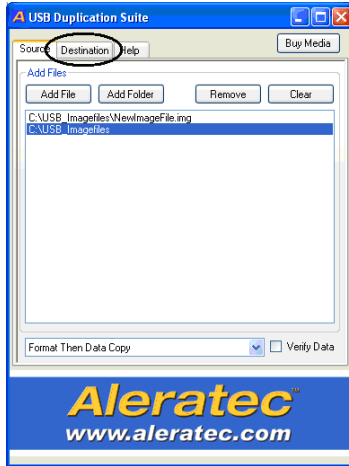
4. If you wish to verify the source data is copied successfully, click to check the box next to “Verify Data.”



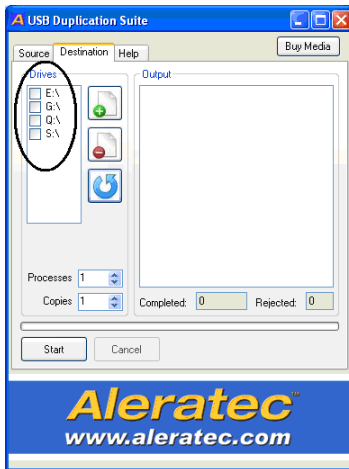
# Using the USB Duplication Suite Software

## Format Then Data Copy - *continued*

- Once you have added all the files/folders you want to copy, click the tab at the top of the window named “Destination.”

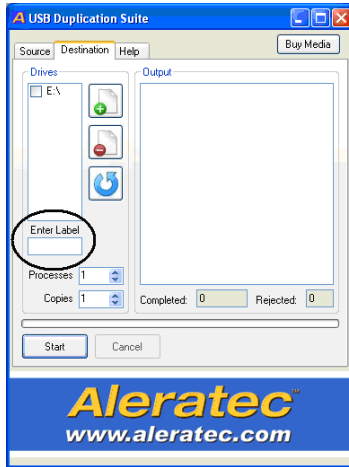


- Select the drives that you wish to format. You can click the button with the green “+” symbol to select all drives or the button with the red “-” symbol to deselect all drives. The button with the blue arrow will refresh the current list of drives.

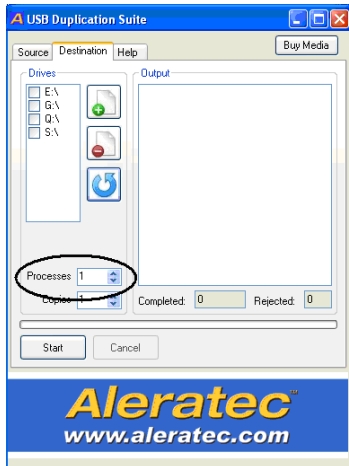


## Using the USB Duplication Suite Software

7. You can specify a single label for each drive in the text box under “Enter Label”. If no label is specified, the label that the drive currently has will be used.



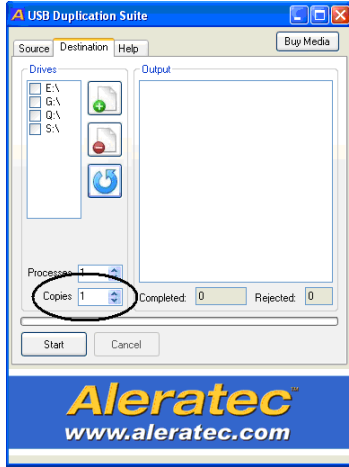
8. The “Processes” counter displays how many concurrent processes you want to run at once. The more processes you choose the more drives will be copied to simultaneously.



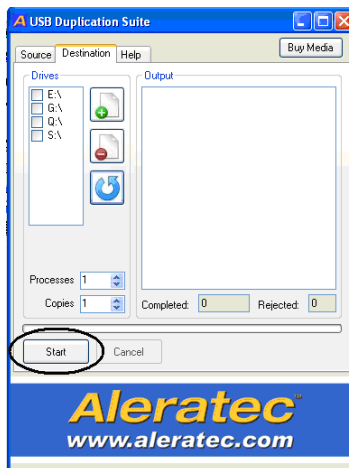
# Using the USB Duplication Suite Software

## Format Then Data Copy - *continued*

- The “Copies” counter shows the total number of copies you want to make. If the number of copies specified is more than the number of available drive slots, the software will break up the job into multiple “rounds,” requiring the user to switch in new targets after each round is completed.



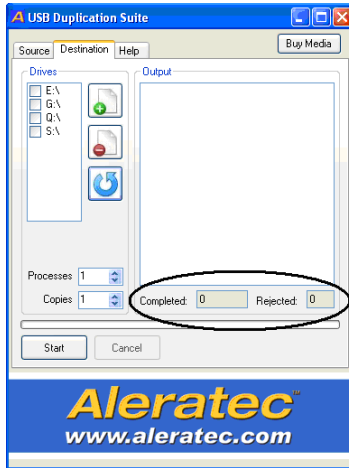
- Once the drives, processes, and copies are specified, the user may click “Start” to begin the duplication process.



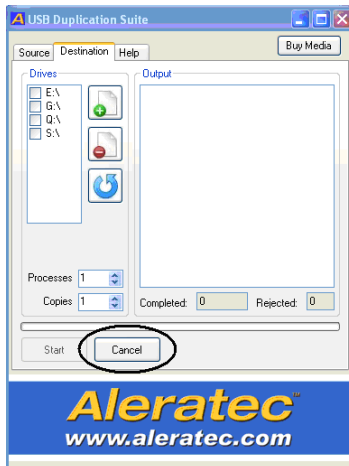


# Using the USB Duplication Suite Software

11. Progress is displayed through messages in the log and in the progress bar. Also, the number of completed and rejected copies is displayed underneath the output log.



12. If the user wishes to cancel the duplication process at any time, just click "Cancel."



# Using the USB Duplication Suite Software

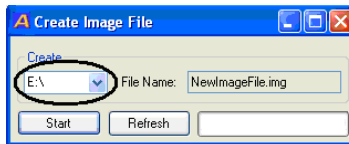
## Create Image File

Use this function to create an image file from a single USB flash drive.

1. From the main menu, choose “Create Image File.” The “Create Image File” module will then pop up.



2. On the left hand side of the screen, you will see a drop-down menu with a list of current drives available. From here, you may choose which drive you want to make an image of. If the desired drive does not appear in this list, you may hit the “Refresh” button located at the bottom of the screen to refresh the list. If there are still problems then skip ahead to the section titled “Drive Letter Management.”

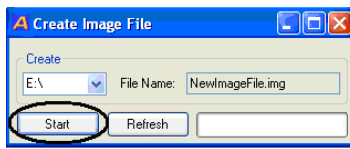


## Using the USB Duplication Suite Software

3. In the box labeled “File Name,” you may enter the name of the newly created image. Include “.img” at the end of the name. All image files are automatically saved in C:\USB\_imagefiles\.



4. Click on “Start” to begin the image creation process. A DOS window will pop up to indicate that the image is being created. Please wait until this screen closes.



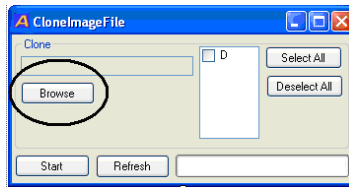
# Using the USB Duplication Suite Software

## Clone Image File

1. From the main menu, choose “Clone Image File.” The “Clone Image File” module will then pop up.



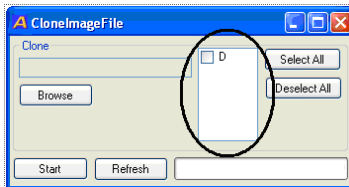
2. Click the “Browse” button on the left hand to select the image file that you want to clone. The name of the image file will appear in the box above the “Browse” button.



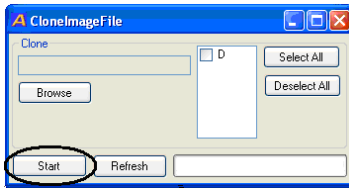
**Note:** Make sure that your selected image file DOES NOT exceed the capacity of the smallest flash drive that you are copying to. This will result in failure.

## Using the USB Duplication Suite Software

3. Select the drives that you wish to clone to. You can click the “Select All” or “Deselect All” buttons to select or deselect all the drives in the list, respectively. You may also click the “Refresh” button to refresh the list of drives, if the desired drive is not in the list. If there are still problems, skip ahead to the “Drive Letter Management” section.



4. Click the “Start” button to begin the cloning process. A DOS window will pop up to indicate that the image is being cloned. Please wait until this screen closes.



**Note:** This process relies on the image file and directory being free from being locked by any other program. For best results, please close all other applications (including all instances of Windows Explorer) before starting this function.

# Using the USB Duplication Suite Software

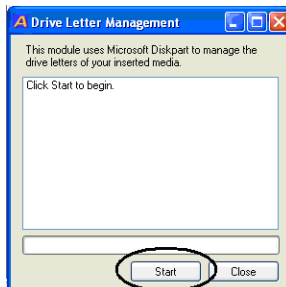
## Drive Letter Management

This module will search your computer for any removable media that do not have any drive letters associated with them and will appropriate one for them. You may use this module if your removable media is not being displayed while using this software.

1. From the main menu, choose “Drive Letter Management.” The “Drive Letter Management” module will then pop up.

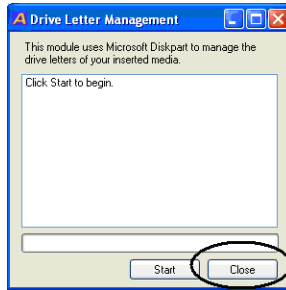


2. Click the “Start” button to begin the process. You will see two DOS windows pop up. The first will remove the drive letters from any removable media with drive letters on them. The second will reappportion the letters to all removable media so that previous media that did not have a drive letter associated with them will now. Do not close the DOS windows until the process is complete.



## Using the USB Duplication Suite Software

3. Once the DOS windows have closed, you may exit the module.

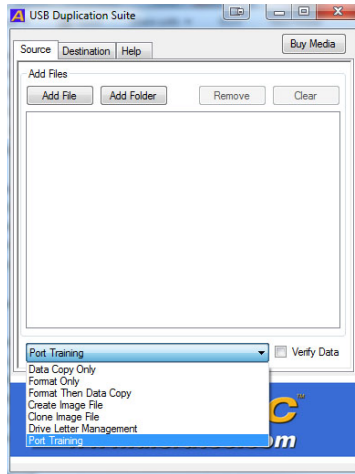


# Using the USB Duplication Suite Software

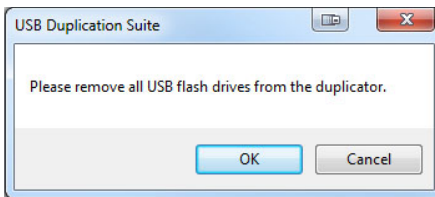
## Port Training

Port Training is used to align the USB port numbers in the software with the USB ports on the front of your duplicator. For best results in using your Aleratec USB 3.0 Copy Cruiser Mini we recommend performing a Port Training prior to the start of a new copy job.

1. Start by choosing Port Training from the drop down menu.



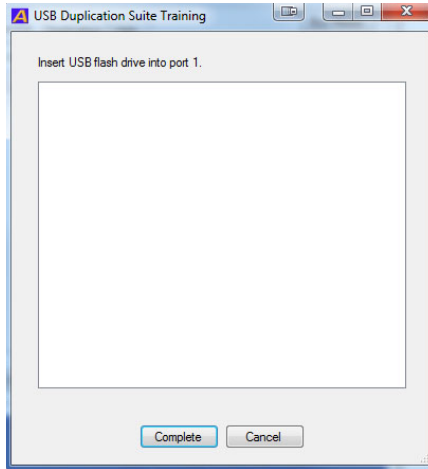
2. A new dialog box will pop-up prompting you to remove all USB flash drives from the duplicator. Click "OK" to continue.



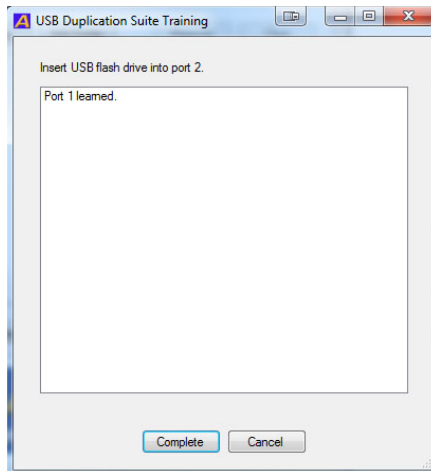


## Using the USB Duplication Suite Software

3. You will now be asked to Insert a USB flash drive into port 1.

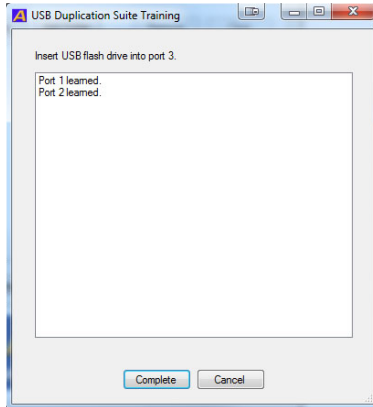


4. Insert a USB flash drive into port 1 and a message stating "Port 1 learned" will be displayed along with a message asking to "Insert USB flash drive into port 2."

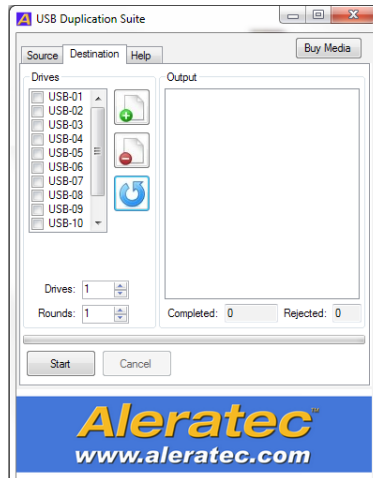


# Using the USB Duplication Suite Software

- Repeat this process until all 10 ports of your duplicator are trained. Then press “Complete” to continue.



- After performing Port Training the designation for USB Flash Drives will change from Window Drive Letters (D,E, F, etc.) to USB-01, USB-02, USB-03, etc.



**Note:** Due to the hardware differences between USB 2.0 and USB 3.0 flash drives, if you train a port using a USB 3.0 drive, it will only work for USB 3.0 drives. The same goes for USB 2.0 drives. Therefore, we suggest you work with batches of the same USB flash drive type if you want to take advantage of Port Training. Whenever you switch from USB 3.0 to USB 2.0 drives, or vice-versa, you will need to perform Port Training to re-align port numbering in the software.

## Technical Support

After reading this Software User Guide, if you need additional assistance, please contact Aleratec Technical Support. Our technical staff will be happy to assist you, but they may need your help to better assist you. Calling Aleratec Technical Support without all the necessary information can be both time consuming and frustrating. Therefore, please try to have your questions about the 1:10 USB 3.0 Copy Cruiser Mini software ready before calling. Please provide enough information about your problems so our technical staff can recreate and diagnose it.

### Technical Support Addresses and Phone Numbers

► By e-mail: **support@aleratec.com** - Skype: **support.aleratec.com**

► By Telephone: **1-818-678-0484**

Technical Support Group can be reached 8:00 AM to 5:00 PM, Pacific Time, Monday through Friday, excluding U.S. holidays.

Please try to call from a phone near your computer system.

► Access is available 24 hours a day, 365 days a year, via:

The World Wide Web at: **www.aleratec.com**

FAX at: **1-818-678-0483**

# Technical Support FAX Back Form

## Aleratec, Inc. Technical Support Fax Back Form

Please record the following information to help expedite any warranty claim:

Model No.: \_\_\_\_\_ Serial No.: \_\_\_\_\_

Date Purchased \_\_\_\_\_

Place of Purchase: \_\_\_\_\_

**To: Technical Support Group FAX: 1-818-678-0483**

FROM: \_\_\_\_\_ FAX: \_\_\_\_\_

E-MAIL \_\_\_\_\_

RE: \_\_\_\_\_ TEL: \_\_\_\_\_

DATE: \_\_\_\_\_ # OF PAGES: \_\_\_\_\_

I am experiencing the following problems with my 1:10 USB 3.0 Copy  
Cruiser Mini software:

---

---

---

---

---

By answering these questions, your problem will be solved more rapidly. Make copies as necessary. You can reach us electronically at: [www.aleratec.com](http://www.aleratec.com) on the internet.

**Notes:**

**Document Number: 330113\_330113EU\_SUG\_ENG\_Rev. A      Copyright © 2013**  
**Specifications subject to change without notice.**

**Aleratec, Inc.**  
**9851 Owensmouth Avenue**  
**Chatsworth, CA 91311 U.S.A.**

**[www.aleratec.com](http://www.aleratec.com)**