



INSTRUCTION MANUAL

CONTRX FORKLIFT JIBS

JLT, PBJLT, CHJLT

INSTALLATION

CONTRX Fork Lift Truck Attachments shall be assembled and installed in accordance with the manufacturer's instructions, unless other specific arrangements have been approved in writing by manufacturer.

Adjust width of forks to match fork pockets of forklift jib attachment. Be sure truck forks extend through full length of fork tubes/pockets. Anchor forklift attachment by securing safety chain to the truck's frame.

OSHA 1910.178(a)(5) indicates "If the truck is equipped with front-end attachments other than factory installed attachments, the user shall request that the truck be marked to identify the attachments and show the approximate weight of the truck and attachment combination at a maximum elevation with load laterally centered." CONTRX provides the information required to enable the user to contact the lift truck manufacturer directly to meet this OSHA requirement. This information can be found on the CONTRX Technical Data tag affixed to the attachment.

OPERATOR TRAINING

Fork lift attachments shall be operated in accordance with manufacturer's operating instructions, and by personnel who have received instructions described in the "Operating Practices" section of these guidelines.

Training shall also include instruction regarding:

1. Details of the operating cycle.
2. Application of the attachment to the load including (according to the manufacturer's instructions) adjustments to the attachment, if any, to adapt it to various sizes and kinds of loads.
3. Instruction in any special operations or precautions that may be required.
4. Recognition of proper load configuration. For example, preferred operation requires an orderly pattern of stacking.
5. Before assuming responsibility for using the attachment, an operator shall demonstrate his understanding of the lifting procedure to the instructor.

The instructor should record, for your personnel evaluation, notes of operator's demonstrated ability.

INSPECTION

The attachment should be visually inspected by or under the direction of an appointed person on a daily or weekly schedule depending on the nature of the attachment and the severity of the service.

Details to look for include but are not limited to:

1. Structural deformation.
2. Cracks in the structural frame, welds, attachment points, mechanically operating parts, any attached slings, clevises and hooks.
3. Malfunctions during operation of a mechanically operating attachment.
4. Loose covers, fasteners and stops.
5. Faulty operation of automatic hold and release mechanisms.
6. Wear of lifting or attachment points, load supporting clevises, pins, slings, linkages and mechanical parts.
7. Missing nameplates and markings. Contact CONTRX for replacements.

MAINTENANCE AND REPAIRS

1. A preventive maintenance program should be established for each attachment by a qualified person based on recommendations made by its manufacturer.
2. Any repairs shall be done by the manufacturer or with instructions and guidance from the manufacturer. If repairs are performed by someone other than the manufacturer a qualified person should have responsibility for repairs. Dated records and details of repairs and parts replacement should be carefully maintained by a qualified person, and copies kept in your possession.
3. Replacement parts shall be at least equivalent to the original manufacturer's specifications

OPERATING PRACTICES DO'S

1. The operator shall have received, read and understood the manufacturer's operating instructions.
2. The operator shall watch carefully that the attachment is performing properly during the lifting procedure.
3. The operator shall be familiar with the standard directing hand signals and forklift operation.
4. The operator shall respond to signals from an appointed person only. However, stop signals from anyone shall be obeyed.
5. The operator shall notify a designated person when he considers a load to be unsafe.
6. The operator shall observe the attachments before using. Any defect found shall be examined by a qualified person to determine if it is a hazard.

DON'TS

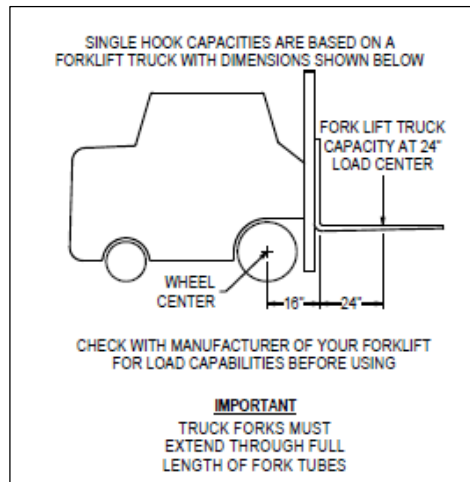
1. The operator shall not operate a malfunctioning attachment or one with an "out of service" tag attached.
2. The operator shall not use the attachments for any purpose(s) other than those designated by the manufacturer's operating instructions.
3. The operator shall not use an attachment when the capacity, weight or safety markings are missing or are not legible.
4. No one shall make alterations or modifications to attachments without consulting the manufacturer.
5. No one shall obscure or paint over the manufacturer's capacity, weight, or safety markings.
6. Loads shall not be lifted higher than necessary or be left suspended unattended.
7. The attachment shall not lift a load that is not properly balanced for safe lifting.

HANDLING THE LOAD

1. The attachment shall not be loaded in excess of its rated capacity.
2. The combined weight of the attachment and load shall not exceed the rated load of the fork lift when load center and lost load is considered. (See fork lift manufacturer’s information).
3. The attachment shall be applied to the load in accordance with the manufacturer's recommended operating procedure.
4. Attachment chains shall not be kinked, and multiple part lines shall not be twisted about each other.
5. The attachment shall not touch obstructions during load movement.
6. The attachment shall not be loaded with loose material that might fall during movement.
7. The operator or other personnel shall not place themselves or any part of their bodies beneath suspended loads.
8. The load or attachment shall not be slid on the floor or other surface.
9. The attachment shall not be used for loads for which it is not designed.
10. Do not attempt to reposition load when raised.
11. A preliminary lift of a few inches shall be made to establish that the load is stable.
12. All loads shall be accelerated and decelerated smoothly. This applies to both mast movement and fork lift movement.

MAXIMUM LOAD ON SINGLE HOOK			
Hook Position	Capacity (lbs.)		
	Max 2 Ton	Max 3 Ton	Max 4 Ton
4 Feet	4000	6000	8000
5 Feet	3700	5700	7500
6 Feet	3400	5400	7000
7 Feet	3000	5000	6500
8 Feet	2500	4200	5500
9 Feet	2100	3500	4500
10 Feet	1800	3000	4000
11 Feet	1600	2700	3500
12 Feet	1500	2500	3000

THESE CAPACITIES DEPEND COMPLETELY ON THE ADEQUACY OF THE LIFT TRUCK BEING USED.



TELESCOPING JIB LIFT

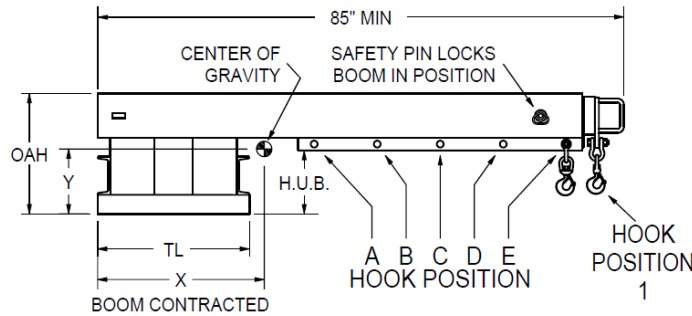
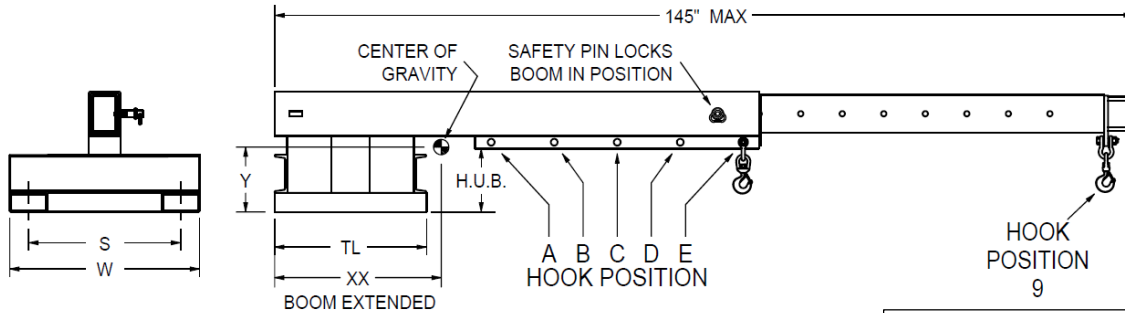
CENTER OF GRAVITY LOCATION

SINGLE HOOK CAPACITIES				
Hook Pos.	Hook Position (inches)	4000 LB. CAP.	6000 LB. CAP.	8000 LB. CAP.
A	34	4000	6000	8000
B	44	4000	6000	8000
C	54	4000	6000	8000
D	64	4000	6000	8000
E	74	4000	6000	8000
1	80	4000	6000	8000
2	87-1/2	3535	5302	6974
3	95	3167	4750	6182
4	102-1/2	2868	4302	5551
5	110	2621	3931	5037
6	117-1/2	2413	3619	4610
7	125	2235	3353	4250
8	132-1/2	2082	3123	3942
9	140	1949	2923	3676

CAP. (LBS)	MODEL NUMBER	DIM. "S"	DIM. "W"	DIM. "TL"	DIM. "H.U.B."	DIM. "OAH"	FORK POCKETS	WT. (LBS)	DIM. "XX"	DIM. "X"	DIM. "Y"
4000	JLT411	11"	17"	24"	10"	19"	2-1/2" X 5-1/2"	373	49.7"	32.3"	11.4"
4000	JLT424	24"	30"	24"	10"	19"	2-1/2" X 5-1/2"	413	46.0"	30.3"	10.6"
4000	JLT430	30"	36"	24"	10"	19"	2-1/2" X 5-1/2"	434	44.4"	29.4"	10.3"
4000	JLT436	36"	42"	24"	10"	19"	2-1/2" X 5-1/2"	455	42.9"	28.6"	10.0"
4000	JLT442	42"	48"	24"	10"	19"	2-1/2" X 5-1/2"	476	41.5"	27.9"	9.7"
6000	JLT613	13"	21"	24"	10"	19"	3-1/2" X 7-1/2"	519	49.8"	32.2"	11.7"
6000	JLT624	24"	32"	24"	10"	19"	3-1/2" X 7-1/2"	544	48.1"	31.3"	11.4"
6000	JLT630	30"	38"	24"	10"	19"	3-1/2" X 7-1/2"	566	46.7"	30.5"	11.2"
6000	JLT636	36"	44"	24"	10"	19"	3-1/2" X 7-1/2"	588	45.4"	29.8"	11.0"
6000	JLT642	42"	50"	24"	10"	19"	3-1/2" X 7-1/2"	610	44.2"	29.2"	10.8"
8000	JLT824	24"	32"	32"	10"	20"	3-1/2" X 7-1/2"	667	50.8"	33.4"	11.7"
8000	JLT836	36"	44"	32"	10"	20"	3-1/2" X 7-1/2"	787	45.5"	30.7"	10.4"
8000	JLT848	48"	56"	32"	12"	22"	3-1/2" X 7-1/2"	909	41.5"	28.7"	10.9"

THIS CHART LISTS SAFE WORKING LOADS FOR THE JIB LIFT ONLY. IT DOES NOT CONSIDER THE FORK TRUCK BEING USED. CONSULT THE FORK TRUCK MANUFACTURER FOR SAFE LOAD CAPABILITIES WITH THIS ATTACHMENT BEFORE USING.

IMPORTANT
TRUCK FORKS MUST EXTEND THROUGH FULL LENGTH OF FORK TUBES



SINGLE HOOK CAPACITIES ARE BASED ON A FORKLIFT TRUCK WITH DIMENSIONS SHOWN BELOW

WHEEL CENTER 16" 24" FORK LIFT TRUCK CAPACITY AT 24" LOAD CENTER

CHECK WITH MANUFACTURER OF YOUR FORKLIFT FOR LOAD CAPABILITIES BEFORE USING

IMPORTANT
TRUCK FORKS MUST EXTEND THROUGH FULL LENGTH OF FORK TUBES

PIVOT BOOM JIB LIFT

CENTER OF GRAVITY LOCATION

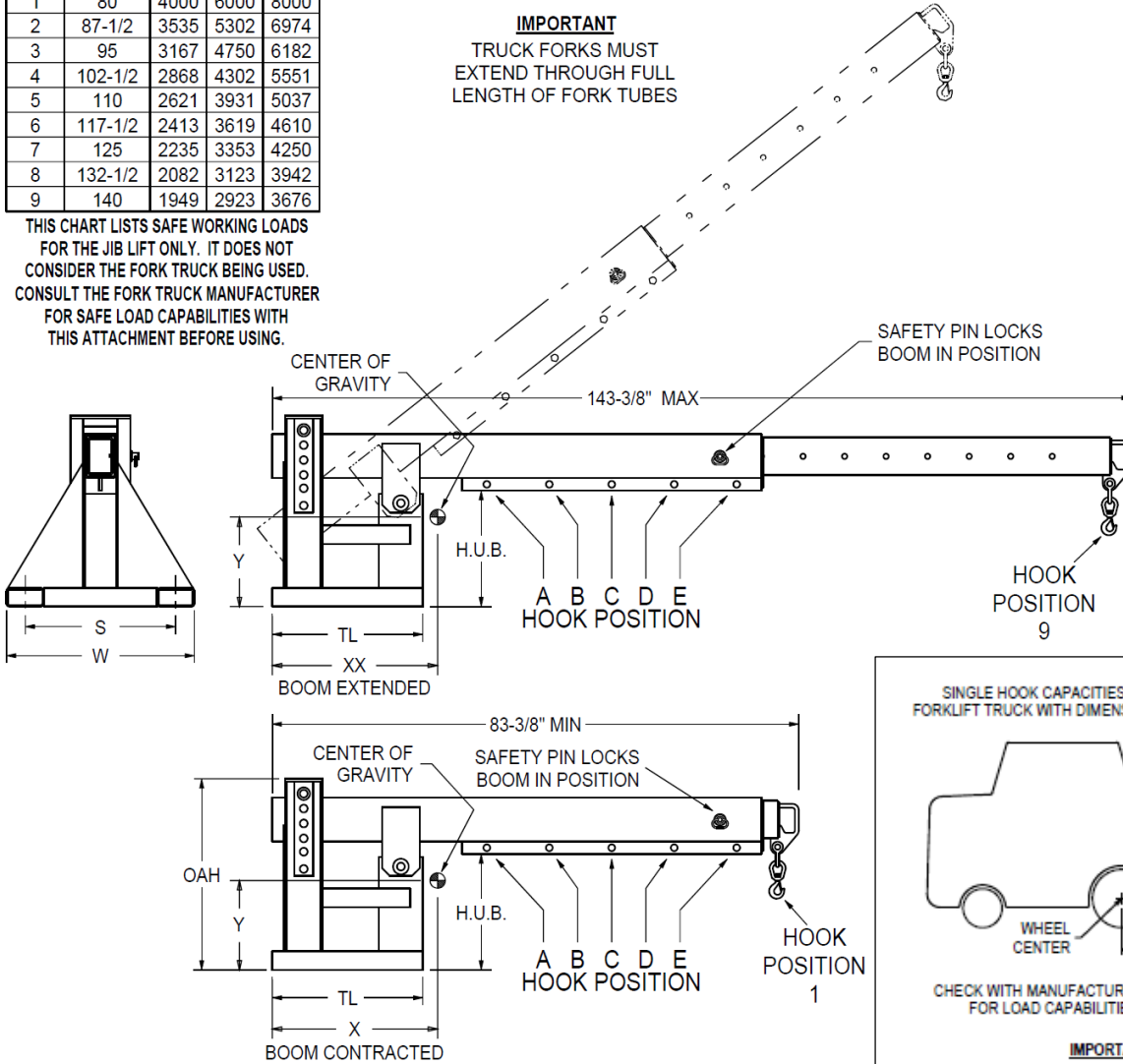
SINGLE HOOK CAPACITIES				
Hook Pos.	Hook Position (inches)	4000 LB. CAP.	6000 LB. CAP.	8000 LB. CAP.
A	34	4000	6000	8000
B	44	4000	6000	8000
C	54	4000	6000	8000
D	64	4000	6000	8000
E	74	4000	6000	8000
1	80	4000	6000	8000
2	87-1/2	3535	5302	6974
3	95	3167	4750	6182
4	102-1/2	2868	4302	5551
5	110	2621	3931	5037
6	117-1/2	2413	3619	4610
7	125	2235	3353	4250
8	132-1/2	2082	3123	3942
9	140	1949	2923	3676

CAP. (LBS)	MODEL NUMBER	DIM. "S"	DIM. "W"	DIM. "TL"	DIM. "H.U.B."	DIM. "OAH"	FORK POCKETS	WT. (LBS)
4000	PB-JLT424	24"	30"	24"	18-1/2"	30-1/2"	2-1/2" X 5-1/2"	491
4000	PB-JLT436	36"	44"	24"	19-1/2"	31-1/2"	3-1/2" X 7-1/2"	588
6000	PB-JLT624	24"	32"	24"	19-1/2"	32"	3-1/2" X 7-1/2"	640
6000	PB-JLT636	36"	44"	24"	23-1/2"	36"	3-1/2" X 7-1/2"	718
8000	PB-JLT836	36"	44"	32"	27-1/2"	41-3/4"	3-1/2" X 7-1/2"	966
8000	PB-JLT848	48"	56"	32"	27-1/2"	41-3/4"	3-1/2" X 7-1/2"	1025

DIM. "XX"	DIM. "X"	DIM. "Y"
39.7"	26.7"	16.5"
36.5"	25.2"	16.7"
41.2"	27.0"	16.2"
38.2"	25.5"	17.2"
38.0"	26.0"	19.7"
35.0"	24.6"	17.4"

THIS CHART LISTS SAFE WORKING LOADS FOR THE JIB LIFT ONLY. IT DOES NOT CONSIDER THE FORK TRUCK BEING USED. CONSULT THE FORK TRUCK MANUFACTURER FOR SAFE LOAD CAPABILITIES WITH THIS ATTACHMENT BEFORE USING.

IMPORTANT
TRUCK FORKS MUST EXTEND THROUGH FULL LENGTH OF FORK TUBES



SINGLE HOOK CAPACITIES ARE BASED ON A FORKLIFT TRUCK WITH DIMENSIONS SHOWN BELOW

FORK LIFT TRUCK CAPACITY AT 24" LOAD CENTER

WHEEL CENTER

18" 24"

CHECK WITH MANUFACTURER OF YOUR FORKLIFT FOR LOAD CAPABILITIES BEFORE USING

IMPORTANT
TRUCK FORKS MUST EXTEND THROUGH FULL LENGTH OF FORK TUBES